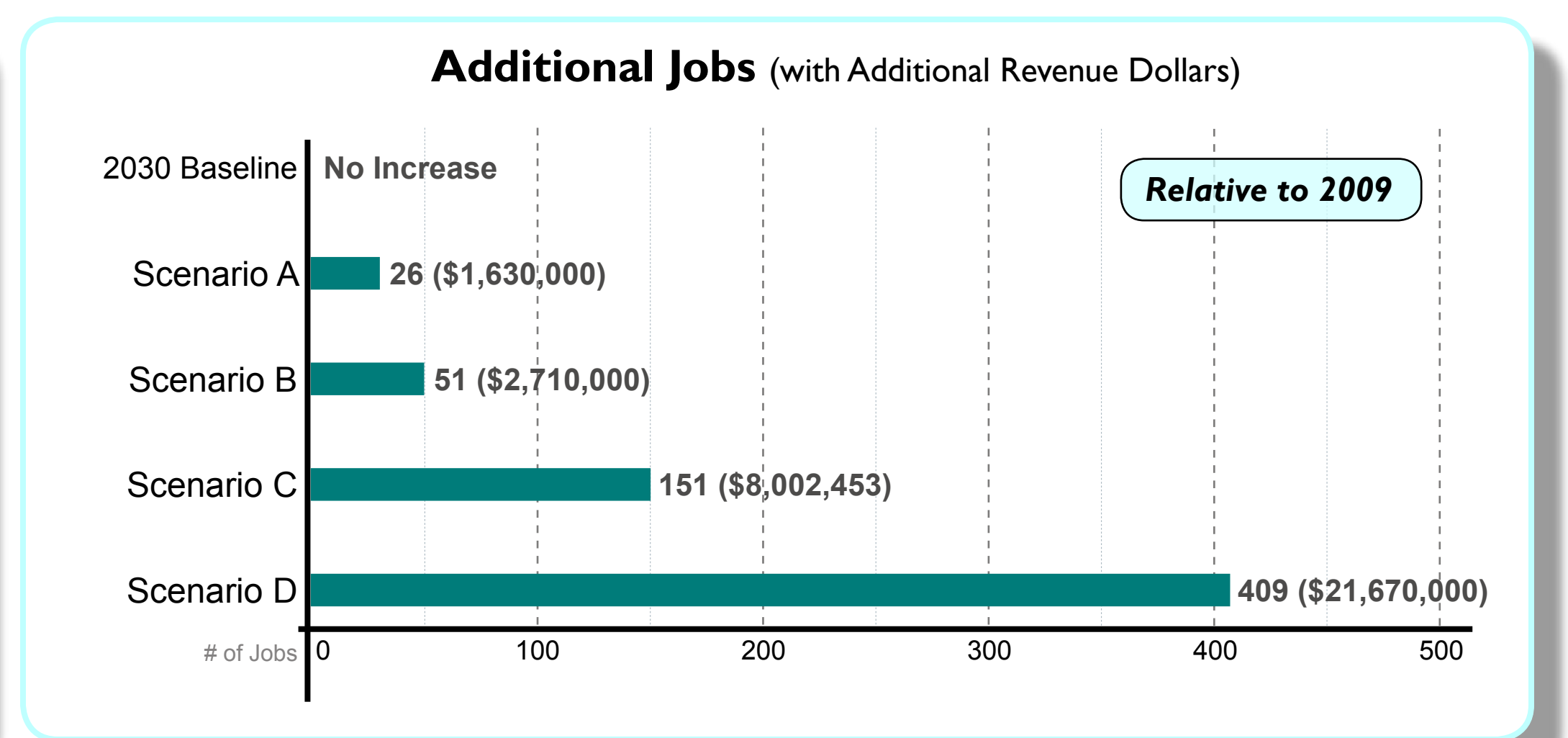
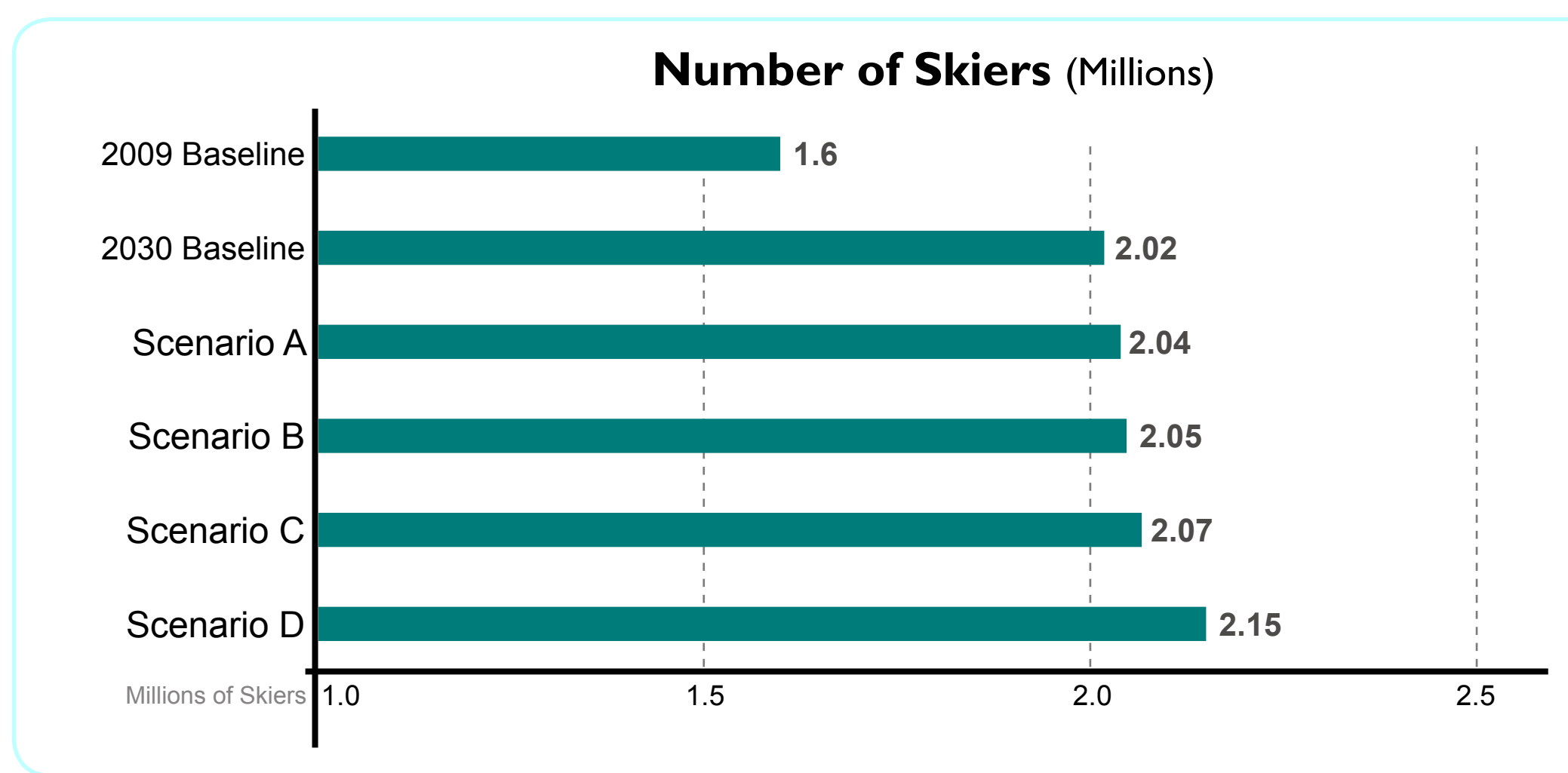
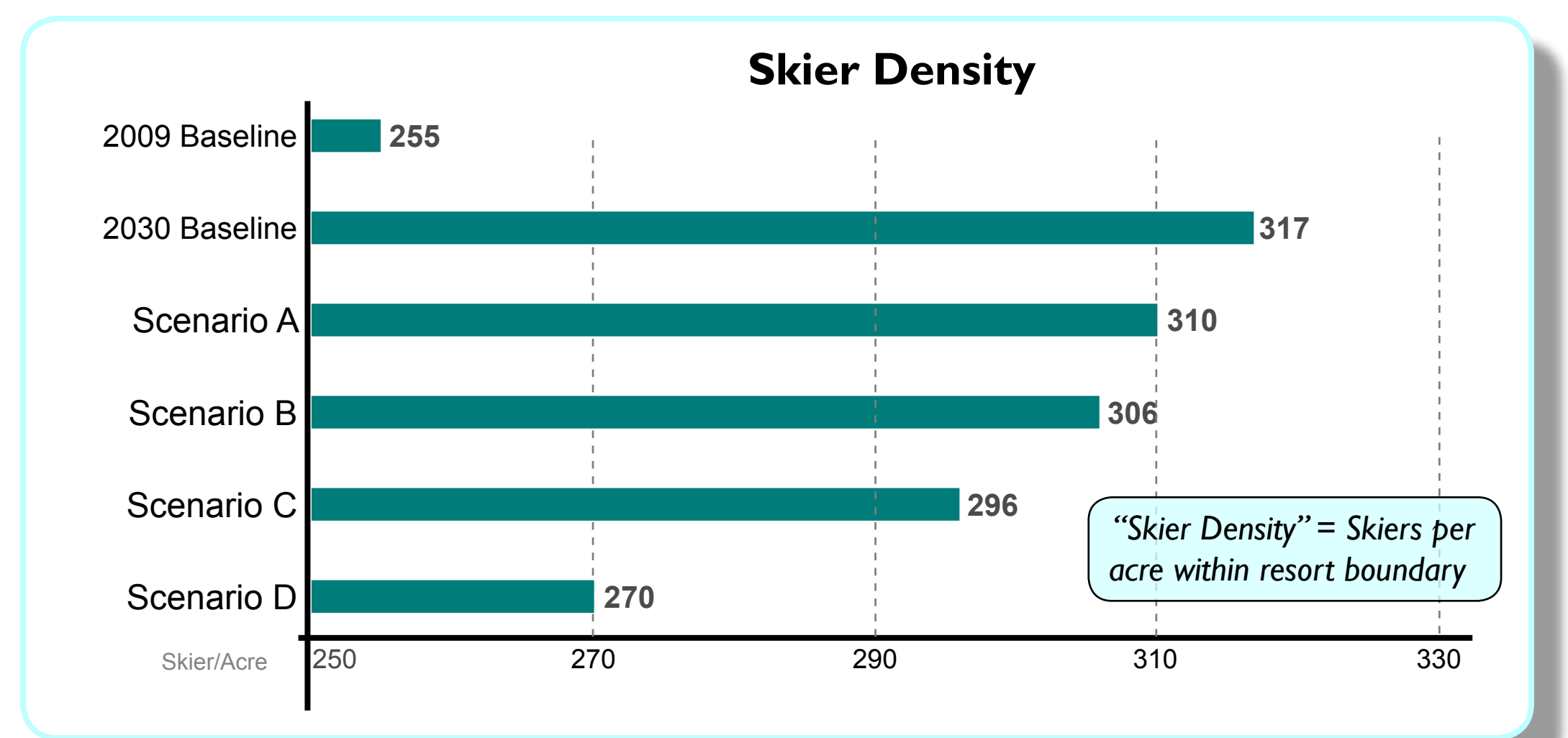
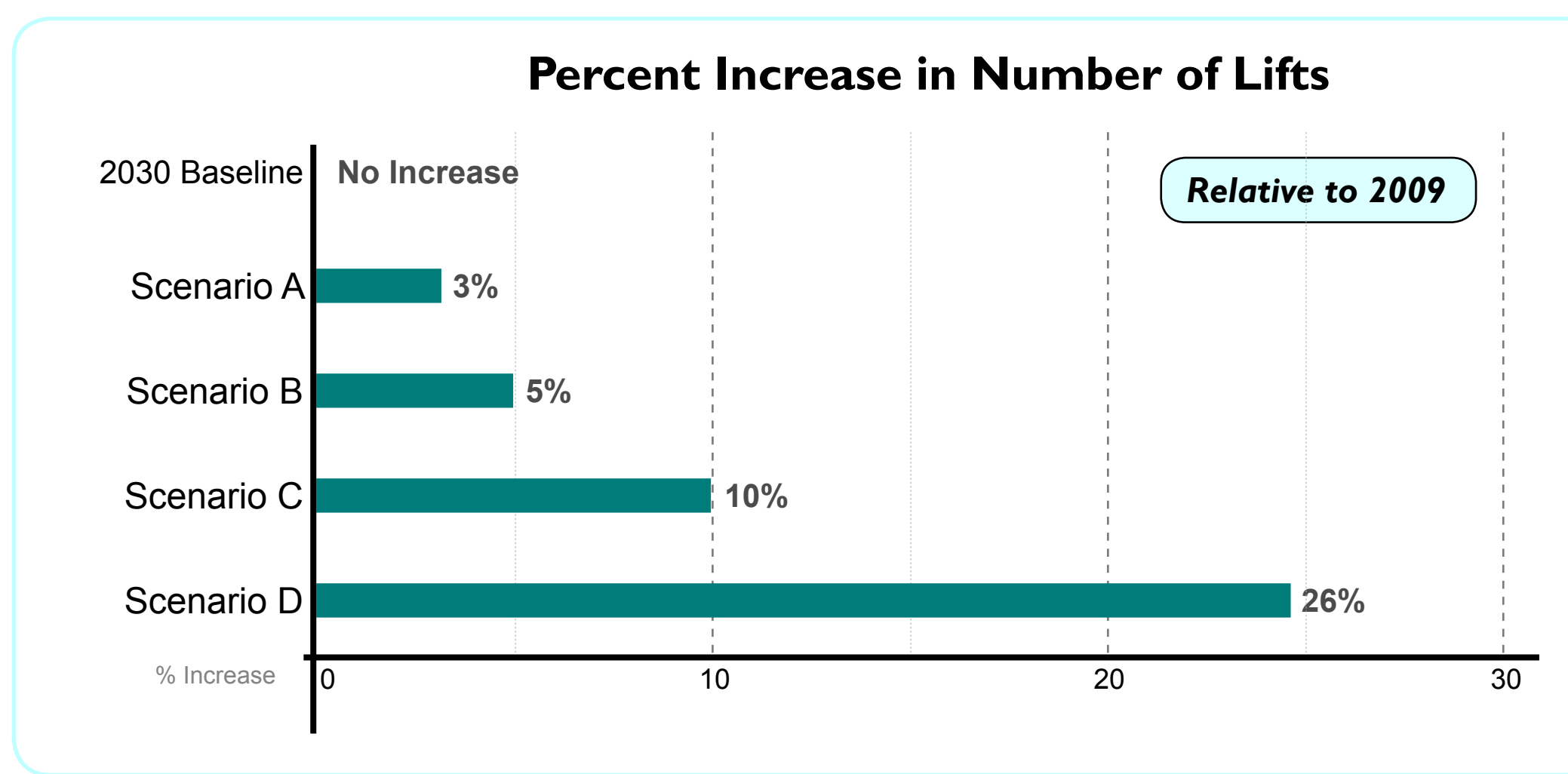


RESORT SCENARIOS SUMMARY

In the Baseline Scenario resorts remain in the existing ski area boundaries with master plan projects, which include some remodeling and expansion of existing buildings. The baseline has the highest skier densities, relative to Scenarios A through D, because it does not add additional land to the ski area boundary: the result, is that natural increases in the industry related to growth of ski-age population and continued attraction of out-of-state skiers will increase skiers from 1.6 million to 2.02 million, a 26% increase in skiers, thereby increasing average skier density from 255 skiers/acre annually to 317 skier/acre annually. As a reference some of the busier Colorado resorts have 400+ skiers/acre.

(Scenarios C & D are inconsistent with 2003 Forest Service Plan. They include building improvements, lifts and additional ski terrain that have not yet gone through public review and environmental assessment.)



Scenario A

Limits resort expansions to existing Forest Service (FS) permit areas and some master planned projects including: limited base area improvements, such a new lodge and operation center. This scenario includes a three percent expansion of lift capacity, reduces the skier density (relative to the Baseline) and adds additional jobs and wages beyond natural growth, related to the minimal expansion of lift capacity. Does not include any infringements on existing winter backcountry ski areas and should have little or no effect on environmental resources due to building improvements being made in already developed areas.



DESCRIPTION	RESORT AREA	IMPROVEMENTS	% LIFT INCREASE	# OF SKIERS (*)	SKIERS/ACRE SKI ACRES	% SKIER/ACRE INCREASE BY 2030	JOBS/WAGES INCREASE FROM 2030 BASELINE
Same as baseline, plus some public transportation enhancements and limited base area improvements.	Within current Forest Service (FS) Boundary	Same as baseline, plus some public transportation facilities and new base lodge and operation center	3%	2.02 Million	310 Skiers/Acre 6,570 Acres	26%	Additional 26 jobs \$1.6 Million

(*) Increases resulting from % lift increase

Baseline: Current Trends Continue

DESCRIPTION	RESORT AREA	IMPROVEMENTS	% LIFT INCREASE	# OF SKIERS (*)	SKIERS/ACRE SKI ACRES	% SKIER/ACRE INCREASE BY 2030	JOBS/WAGES
Resort expansion limited to approved master plan projects.	Within current FS Boundary	Current Facilities and Terrain	-	1.6 Million	255 Skiers/Acre 6,379 Acres	-	Baseline \$150 Million

DESCRIPTION	RESORT AREA	IMPROVEMENTS	% LIFT INCREASE	# OF SKIERS (*)	SKIERS/ACRE SKI ACRES	% SKIER/ACRE INCREASE BY 2030	JOBS/WAGES
Limit resort expansion to existing Forest Service (FS) permit areas and approved Master Plan projects.	Within current FS Boundary	Some remodeling and expansion of existing buildings (already approved)	No Increase	2.02 Million	317 Skiers/Acre 6,379 Acres	24%	Baseline \$220 Million

(*) Assumes a growth rate of 1% based on historic growth

Scenario B

Allows expansion within the FS permit boundary and on private land, including some new base lodges and operation centers. Scenario B adds 5% lift capacity and reduces skier density to 306 skiers/acre relative to the baseline; the number of skiers in 2030 increases by 30,000 due to added capacity and ski terrain. Does not include any infringements on existing winter backcountry ski areas and should have little or no effect on environmental resources due to building improvements being made in already developed area.



DESCRIPTION	RESORT AREA	IMPROVEMENTS	% LIFT INCREASE	# OF SKIERS (*)	SKIERS/ACRE SKI ACRES	% SKIER/ACRE INCREASE BY 2030	JOBS/WAGES INCREASE FROM 2030 BASELINE
Allow expansion on Forest Service (FS) permit boundary and on private land	Within current FS Boundary	Some new base lodges and resort operation centers	5%	2.05 Million	306 Skiers/Acre 6,698 Acres	20%	Additional 51 jobs \$2.7 Million

(*) Increases resulting from % lift increase

Scenario C

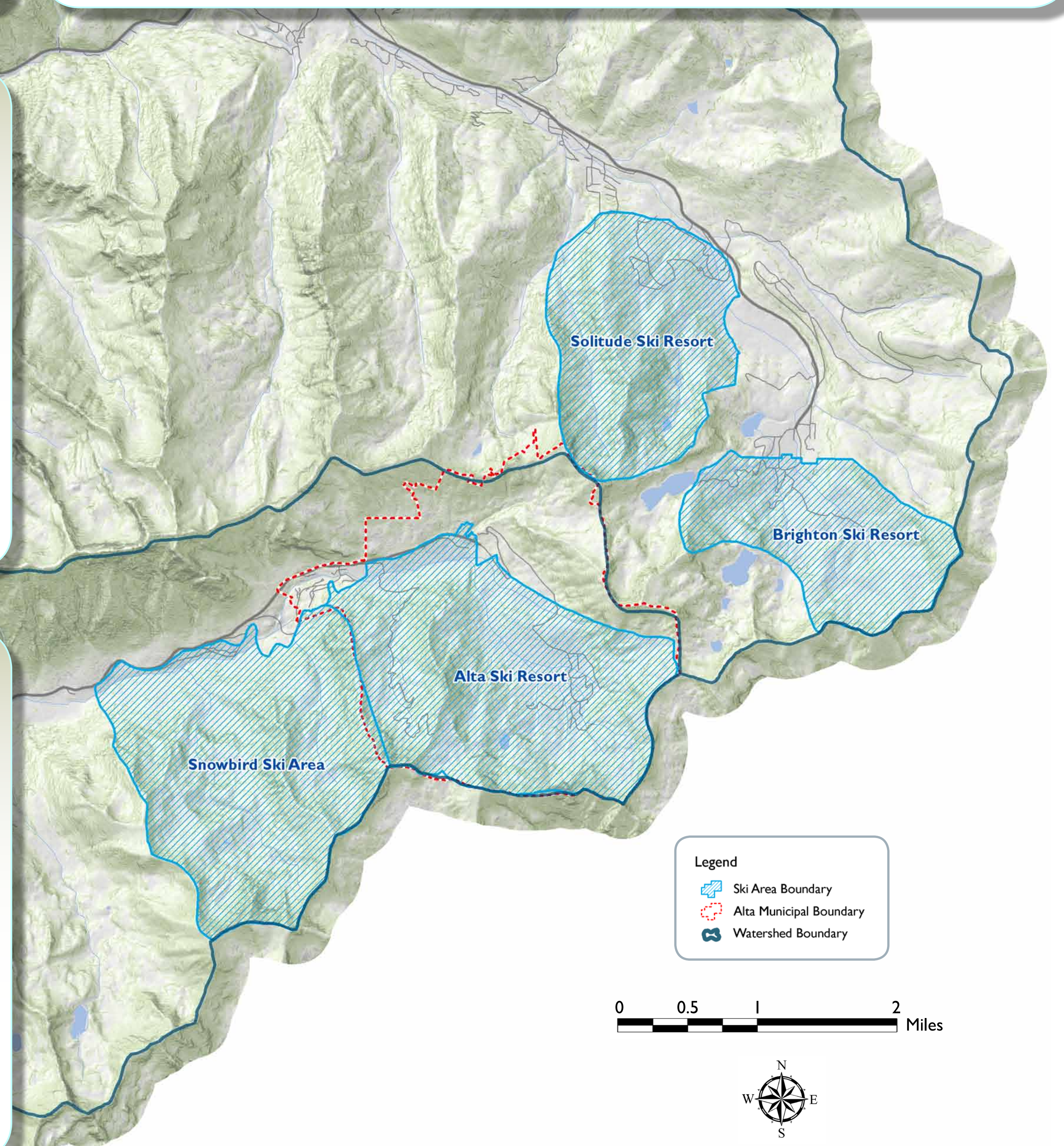
Anticipates growth in ski industry by 2030 and accommodates more skiers through building improvements and additional ski lifts (within existing Forest Service (FS) permit boundaries). Scenario C includes some new base area lodges and operation centers, remodeling and parking area improvements. Scenario C adds 10% to 2009 ski lift capacity and accessible ski terrain, adding 50,000 new skiers (compared to the baseline) and adding roughly 150 new jobs and \$8 million in new wages in the ski industry. While Scenario C has 50,000 more skiers than today, the skier density and quality of experience would be better than the baseline, since new terrain and ski lifts are added, keeping the skier density below 300 skiers/acre (296 skiers/acre, compared to 255 skiers/acre in 2009). Some of the resort improvements in Scenario C would require additional environmental study and public input to address environmental impacts and other concerns.



DESCRIPTION	RESORT AREA	IMPROVEMENTS	% LIFT INCREASE	# OF SKIERS (*)	SKIERS/ACRE SKI ACRES	% SKIER/ACRE INCREASE BY 2030	JOBS/WAGES INCREASE FROM 2030 BASELINE
Emphasis on base areas at resorts. New buildings and lifts added within existing FS boundaries (**)	Within current FS Boundary	Some new base lodges and resort operation centers, remodeling and parking area improvements	10%	2.07 Million	296 Skiers/Acre 7,017 Acres	16%	Additional 151 jobs \$8 Million

(*) Increases resulting from % lift increase

(**) Inconsistent with 2003 Forest Plan. Would require additional analysis and possibly an amendment to the 2003 Forest Plan.



Scenario D

Allows expansion within the FS permit boundary and on private land, including some new base lodges and operation centers. Scenario D adds 26% lift capacity and reduces skier density to 270 skiers/acre relative to the baseline; the number of skiers in 2030 increases by 30,000 due to added capacity and ski terrain. Does not include any infringements on existing winter back-country ski areas and should have little or no effect on environmental resources due to building improvements being made in already developed areas.



DESCRIPTION	RESORT AREA	IMPROVEMENTS	% LIFT INCREASE	# OF SKIERS*	SKIERS/ACRE SKI ACRES	% SKIER/ACRE INCREASE BY 2030	JOBS/WAGES INCREASE FROM 2030 BASELINE
Allow expansion outside of FS boundaries. Resort base area expansion and on mountain ski area expansion (**)	Within and outside current FS Boundary	Several new base lodges and facilities in addition to remodeling existing buildings	26%	2.15 Million	270 Skiers/Acre 7,974 Acres	5%	Additional 409 jobs \$21.6 Million

* Increases resulting from % lift increase

** Inconsistent with 2003 Forest Plan. Would require additional analysis and possibly an amendment to the 2003 Forest Plan.

Aerial View of the Salt Lake and Summit County Resorts

